

A APEX ULTRTEX SIDING SYSTEM

The APEX Ultrtex Siding System is a new class of siding and trim made with Ultrtex pultruded fiberglass, Marvin's patented proprietary material that has been used in the company's Integrity and Infinity windows and doors for 20 years. With an expected life of 50 years or more, the system is extremely durable and resistant to moisture intrusion, impacts, extreme weather, and harsh coastal environments. APEX's color-coordinated system incorporates a self-aligning, interlock design, which ensures secure placement, tight seams, and no visible nail holes.

For more information, circle no. 821

B INSULATED STEEL SIDING PANELS

Rollex's Thermal-Pro Insulated Steel Siding Panels combine the strength, beauty, and durability of steel siding with the insulating benefits of foam to deliver the ultimate exterior siding product on the market. Thermal-Pro wraps the home in a beautifully appealing thermal blanket that will perform for decades.

For more information, circle no. 822

C CHROMA FINISH

Originally developed for commercial construction projects for corporate clients where color matching is absolutely critical (think IKEA blue), BASF Wall Systems' Chroma Finish is a new colorant for EIFS projects that require intense colors and high color retention. The technology can be used to produce strong, vibrant colors like deep blues and bright reds, and includes a fade-resistance warranty. Chroma Finish's acrylic chemistry ensures long-term film flexibility and crack resistance.

For more information, circle no. 823

D TRUEXTERNAL TRIM

Designed for a variety of applications, TruExterior Trim from Boral is similar to wood but provides enhanced durability and workability, and is virtually free from rotting, splitting, and termites. It also maintains a high level of dimensional stability during periods of moisture and temperature change, is suitable for ground contact, and does not require end-sealing, special adhesives, or other costly installation techniques.

For more information, circle no. 824

E VERSETTA STONE UNIVERSAL CORNER

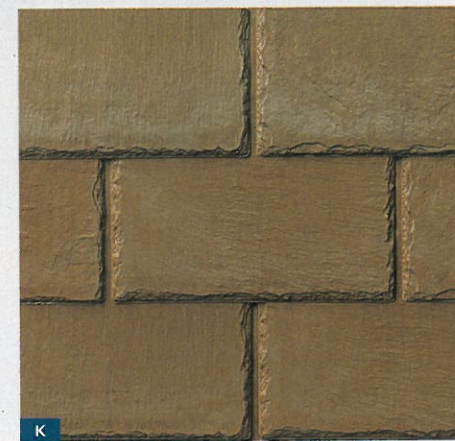
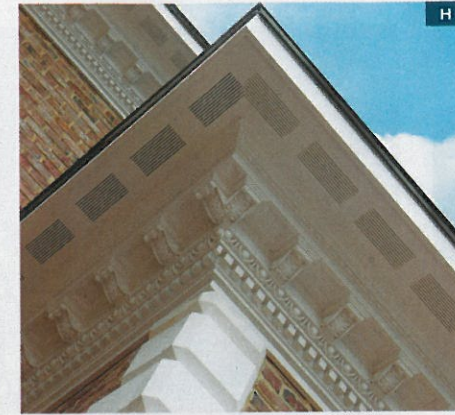
Boral Stone Products' Versetta Stone Universal Corner is designed for use on outside corners, inside corners, and end wall terminations in conjunction with Versetta Stone flat panels. The moldings and colors replicate natural stone and the subtle nuances found in nature. A mechanical fastening system allows for quick and easy installation and it requires no mortar, paint, coat, or seal.

For more information, circle no. 825

F THRU-WALL BLOCK UNITS

CalStar's Thru-Wall Unit combines the structural properties of standard concrete block with the preferred aesthetic of a traditional brick wall. With nominal sizes of 8 x 4 x 16 and 12 x 4 x 16 inches, the Thru-Wall Unit is half as tall as standard concrete blocks for an authentic brick look and structural use. The dual-sided unit features both a flat face for a classic, 16-inch appearance and a notched face to fill with mortar for the look of 8-inch bricks.

For more information, circle no. 826



G APOLLO SOLAR ROOFING SYSTEM

CertainTeed's new Apollo Solar Roofing System is lightweight, durable, resistant to wind uplift, and can easily be integrated into either an existing roof or a new roof that combines solar panels and asphalt shingles. Unlike rack-mounted solar systems, Apollo fully integrates with roofing shingles for a clean, seamless appearance. Each slim, 12-pound module features 14 high-efficiency polycrystalline silicon solar cells.

For more information, circle no. 827

H SOFFIT SYSTEM

Versatex Trimboard has developed a complete, low-maintenance, high-architectural-appeal soffit system, coupled with notched fascia and frieze boards. This system is the first of its kind in cellular PVC. The Soffit System is available in 12- and 16-inch widths and lengths of 18 feet to reduce joints. The vented soffit has a series of 1/8-inch-wide grooves, specially designed to minimize insect infiltration. The venting pattern features 10 square inches of free air space per lineal foot, making it one of the most effective airflow systems on the market.

For more information, circle no. 828

I STO AIRSEAL

Sto Corp.'s Sto AirSeal is a fluid-applied, acrylic-based air barrier material that cures to form a seamless membrane. It is part of the StoEnergy Guard family of products and is compatible with the various StoGuard accessory items used to treat sheathing joints and rough openings. The product is waterproof and vapor permeable, does not tear or lose its effectiveness while in service, and resists UV degradation.

For more information, circle no. 829

J FOUNDRY STACKED STONE

Bringing installation ease and a highly desirable ledgestone aesthetic, Foundry Stacked Stone from Tapco Group expands the company's Stone Collection of premium vinyl siding. Foundry Stacked Stone features bold, rugged texture cast from hand-selected North Carolina quarried stone and textured grout lines for added authenticity. An enhanced coloring process delivers scores of vibrant undertones and tonal differences.

For more information, circle no. 830

K INSPIRE SLATE COOL ROOFING

InSpire Slate Cool Roofing from Tapco Group uses advanced pigment technology to provide high solar reflectance. Available in nine colors from traditional Granite, Evergreen, and Mountain Plum to innovative shades like Red Cedar and Sand, these cool roofing colors can potentially lower a roof's surface temperature by reflecting sunlight and reradiating heat away from the roof. This reduces the heat transferred into a home and cuts peak cooling demand by up to 15 percent.

For more information, circle no. 831

L TRUE STACK

Ply Gem Stone's True Stack allows for clean and simple installation, ideal for those looking for a time-saving solution that achieves a detailed stacked-stone look. The slender, horizontal shapes are available in 9-, 13-, and 18-inch-long panels with matching corner stones to create rustic stacked-stone walls for both exterior and interior applications. The back of the stone pieces features a 1/4-inch groove around all sides, creating a gap for mortar to fill.

For more information, circle no. 832